

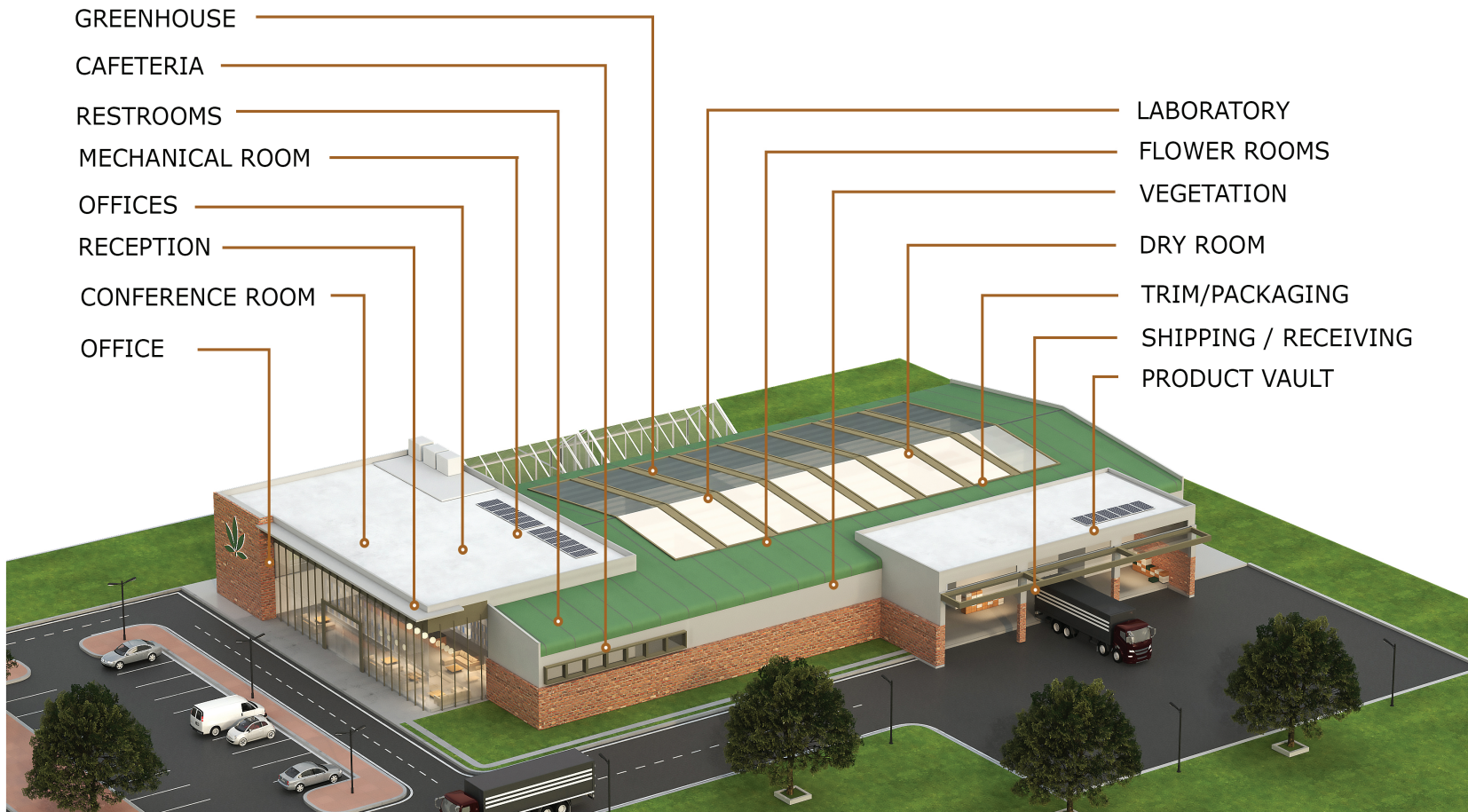
STONHARD

SEAMLESS, SANITARY, EASY-TO-CLEAN FLOORS FOR
EVERYWHERE IN YOUR CANNABIS PROCESSING FACILITY.
EVERYWHERE.



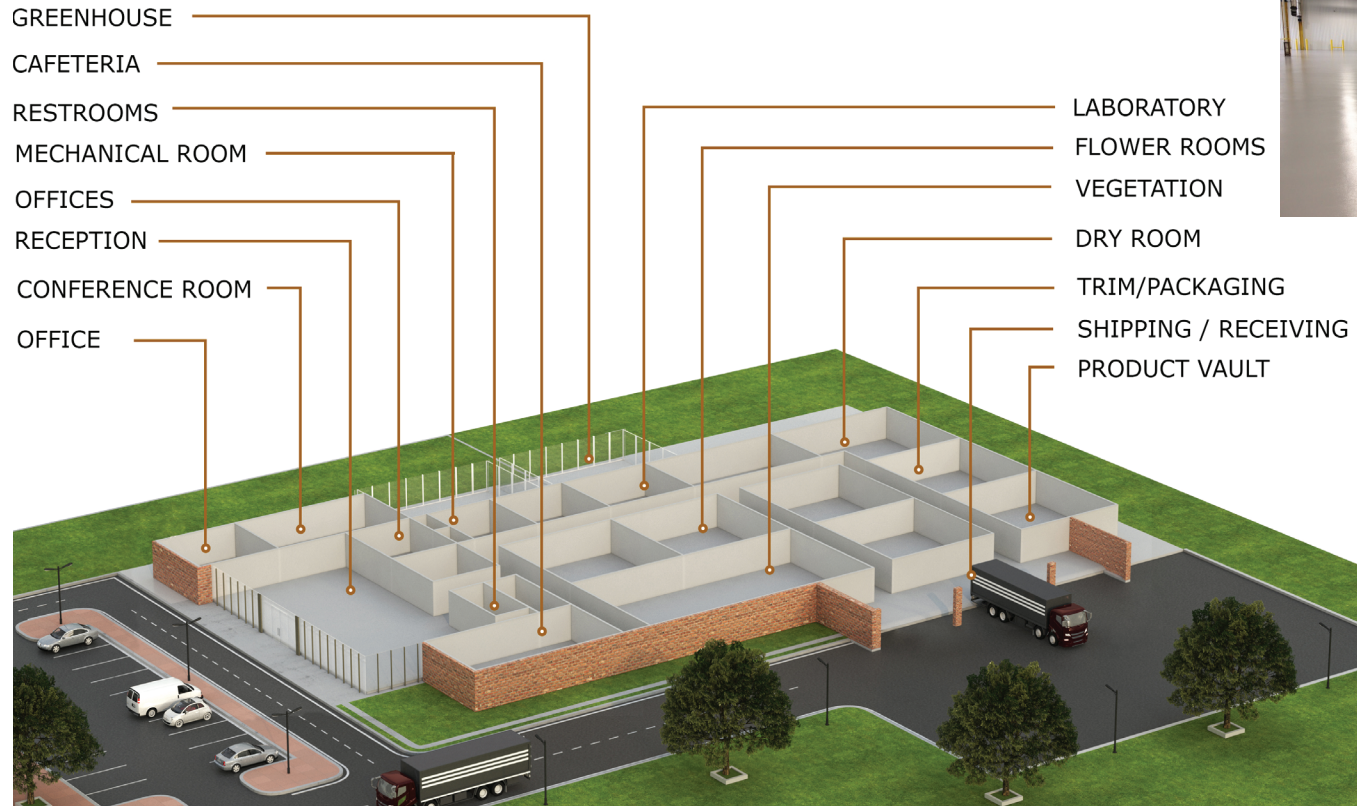
PERFORMANCE, DESIGN & RESULTS.

From greenhouses and flower rooms to labs and office spaces, select from a wide variety of floor systems with endless options in textures, finishes and colors.



Our STONCLAD product line is seamless, offered in epoxy or urethane systems, troweled or self-leveling and delivers long-term protection against bacterial growth, corrosive attacks, impact and abrasion. And Stonhard works with you, taking responsibility for both products and installation. www.stonhard.com.

PROVEN SOLUTIONS TO PROTECT PROCESS ENVIRONMENTS AND KEEP THEM OPERATING HYGIENICALLY AND EFFICIENTLY





WE WANT YOU TO FIND THE RIGHT FLOORS FOR ALL THE SPACES IN YOUR FACILITY

Seamless, sanitary floors will help you keep your facility operating successfully. For nearly a century we have been formulating and installing floors in process areas. We know how to prepare new concrete or rehab the existing substrate, and we take responsibility for both product and installation. We will also support you by providing cleaning guidelines and product recommendations. Contact us today, www.stonhard.com.

STONHARD



Maple Shade, NJ, USA HQ | (800) 257.7953 | stonhard.com