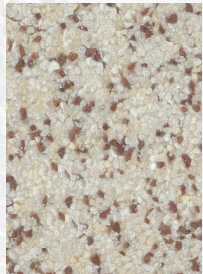
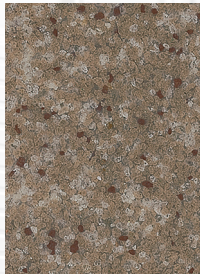


# COLORES ESTÁNDAR

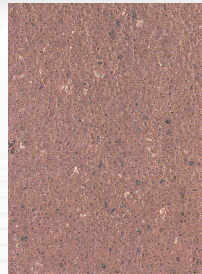
COLORES STONBLEND® GSI/HDF



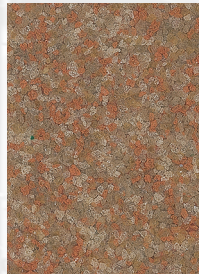
Sandstone



Russet



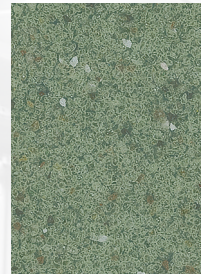
Clay



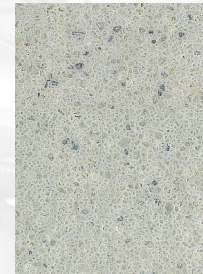
Autumn



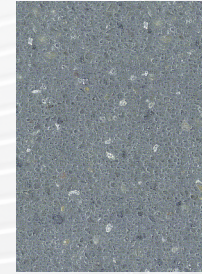
Meadow



Willow



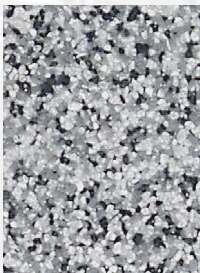
Stone



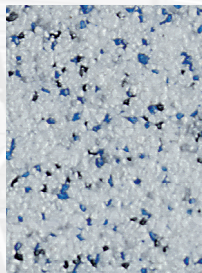
Shale



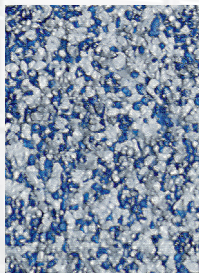
Sierra



Crushed Slate



Blue Topaz



Black Sapphire

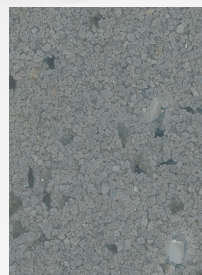
COLORES STONBLEND® GSI-G



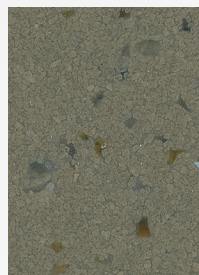
Luna



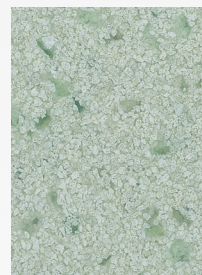
Cork



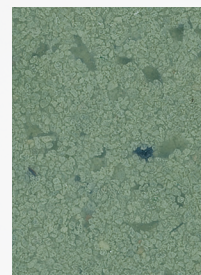
Wolf Gray



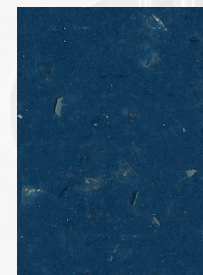
Macchiato



Tea Leaf



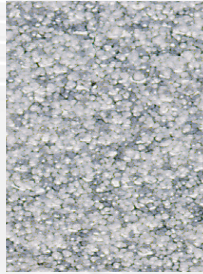
Topiary



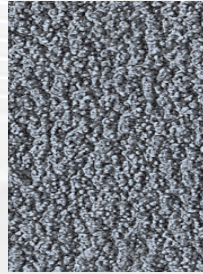
Iris

# COLORES ESTÁNDAR

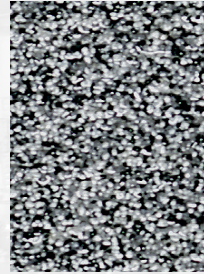
## COLORES STONSHIELD®



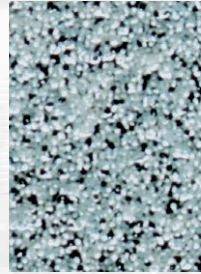
Flagstone



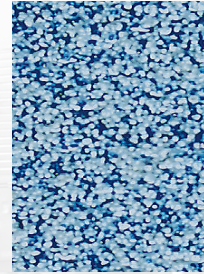
Steel Gray



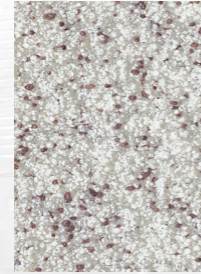
Ash



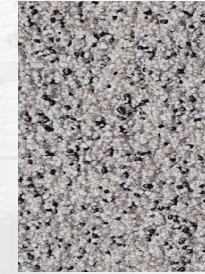
Glacier



Cobalt



Malt



Driftwood



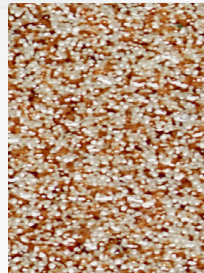
Frappe



Wood Smoke



Gotham Gray



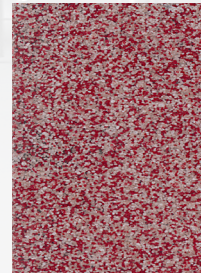
Nutmeg



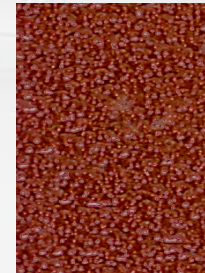
Acorn



Espresso



Cranberry



Brick Red



Los Juevez 26, CDMEX, MÉXICO | (800) 347 8662 | [stonhard.com](http://stonhard.com)



Las reproducciones en color son tan precisas como la fotografía moderna y los métodos de impresión de calidad pueden producir. Para obtener el color real, solicite una muestra. [www.stonhard.com](http://www.stonhard.com). Stonhard considera que la información aquí contenida es verdadera y exacta. Stonhard no ofrece ninguna garantía, expresa o implícita, basada en esta literatura y no asume ninguna responsabilidad por daños consecuentes o incidentales en el uso de estos productos y sistemas descritos, incluyendo cualquier garantía de comerciabilidad o idoneidad. La información aquí contenida es sólo para evaluación. ©Stonhard 2022.

# STONHARD®

## GUÍA DE SELECCIÓN DE COLOR

AGREGADO DE CUARZO



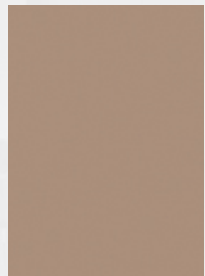
# COLORES PREMIUM

Los pisos Stonshield y Stonblend, ambos fabricados con cuarzo de color, están disponibles en colores estándar (en stock), así como en una amplia gama de colores premium (fabricados por pedido y con un aumento en costo). Los patrones de colores premium pueden crearse utilizando cualquiera de los colores sólidos que se muestran en esta guía. Consulte nuestro visualizador de colores interactivo en nuestro sitio web, [stonhard.com/en Colecciones de colores](http://stonhard.com/en/Colecciones-de-colores). Los pisos Stonshield se ofrecen tanto en acabado mate como brillante, Stonblend se ofrece sólo en acabado mate. Ambos sistemas son ideales para espacios industriales y comerciales.

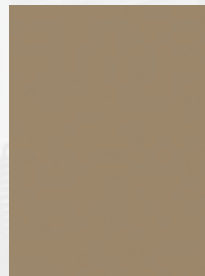


\* versiones en Stonblend en negritas

# COLORES PREMIUM



1018C 3061C



2006C 3006C



2002C 2003C



2008C 3008C



2007C 3007C



1013C 3060C



2004C 3004C



1034C 870MC



2013C 3013C



2014C 3014C



2058C 3058C



2010C 3010C



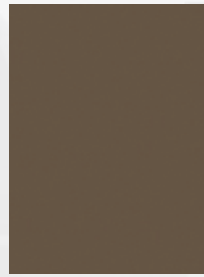
1033C 869MC



2055C 867MC



2011C 3011C



2012C 3012C



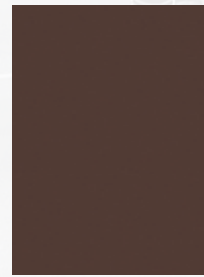
2017C 3017C



1020C 872MC



2015C 3015C



1014C 854MC



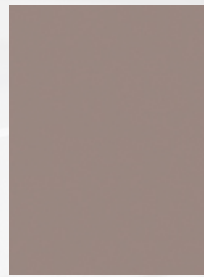
2016C 3016C



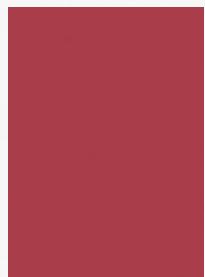
1017C 857MC



2053C 865MC



1022C 3063C



2045C 3045C



2046C 3046C



1021C 3062C



2047C 3047C



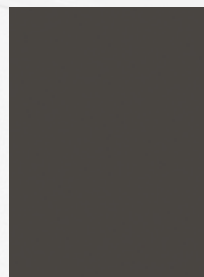
2021C 3021C



2022C 3022C



1011C 851MC

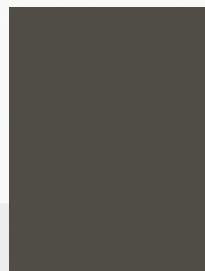


2049C 861MC

# COLORES PREMIUM



2018C **3018C**



2019C **3019C**



2020C **3020C**



2034C **3034C**



2041C **3041C**



2040C **3040C**



2030C **3030C**



2031C **3031C**



2033C **3033C**



1015C **855MC**



2025C **3025C**



2024C **3024C**



2026C **3026C**



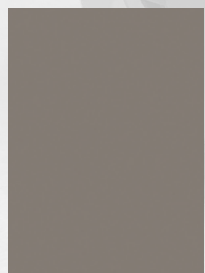
2028C **3028C**



2027C **3027C**



2032C **3032C**



2051C **863MC**